

ISSN 2521-1455
ISSN 2523-4250

Art of Medicine

A close-up photograph of a doctor's hands holding a black stethoscope. The doctor is wearing a white lab coat. The background is a light teal color with a faint geometric pattern of overlapping shapes.

№ 1(29) січень-березень, 2024

Міністерство охорони здоров'я України
Івано-Франківський національний медичний університет**Засновник та видавець:**
Івано-Франківський національний
медичний університет**Свідцтво про державну
реєстрацію друкованого
засобу масової інформації**
серія КВ № 22689-12589Р
від 24.03.2017 р.

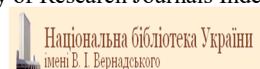
Виходить чотири рази на рік

Рекомендовано Вченою радою
Івано-Франківського національного
медичного університету
МОЗ України
Протокол № 6 від 30.05.2017 р.Журнал включений до Переліку
наукових фахових видань України, в
яких можуть публікуватися
результати дисертаційних робіт
за спеціальностями:
221- Стоматологія, 222-Медицина,
227-Фізична терапія, ерготерапія,
228-Педіатрія
(Наказ МОН України № 1301
від 15.10.2019 року),
226- Фармація та промислова фармація
(Наказ МОН України № 1309
від 25.10.2023 року).**Адреса редакції:**
Україна, 76018
м. Івано-Франківськ,
вул. Галицька 2,
Івано-Франківський національний
медичний університетТелефон: (0342) 53-32-95;
(0342) 53-79-84.
Факс: (03422) 2-42-95
www.art-of-medicine.ifnmu.edu.ua
E-mail: artmedifdmu@gmail.com
artofmedicine@ifnmu.edu.uaРозповсюджується в Україні
та закордоном.Мови публікації: українська,
англійська, німецька, французька,
польськаРобота редакційної колегії орієнтована на норми та принципи [International Committee of Medical Journal Editors](#)This work is licensed under a Creative Commons
Attribution 4.0 International License

“Art of Medicine”

Науково-практичний журнал
№ 1 (29) січень - березень, 2024 року

Категорія Б

Журнал внесений до міжнародних наукометричних баз даних:
Google Scholar, "Scientific Periodicals of Ukraine" the Vernadsky National Library of
Ukraine, Academic Resource Index – ResearchBib, Directory of open access scholarly
resources (ROAD), Directory of Research Journals Indexing (DRJI), EuroPub, Crossref**Шеф-редактор:** Рожко М.М.
Науковий редактор: Вакалюк І.П.**Головний редактор:** Чурпій І.К.**Редакційна колегія:**Андрійчук О.Я., Дудник В.М., Ерстенюк Г.М.,
Кошовий О.М, Ожоган З.Р., Федоров С.В.**Редакційна рада:**Александрук О.Д. (Івано-Франківськ)
Антонів Р.Р. (Івано-Франківськ)
Бакалюк Т.Г. (Тернопіль)
Біда В.І. (Київ)
Бобрикович О.С. (Івано-Франківськ)
Болдіжар П.О. (Ужгород)
Борисенко В.Б. (Харків)
Василіук Н.В. (Івано-Франківськ)
Василіук С.М. (Івано-Франківськ)
Вітовський Р.М. (Київ)
Геник Н.І. (Івано-Франківськ)
Георгіячук В.А. (Харків)
Георгіячук М. А. (Харків)
Годлевська Н.А. (Вінниця)
Голод Н.Р. (Івано-Франківськ)
Голоток В.В. (Івано-Франківськ)
Грицик А.Р. (Івано-Франківськ)
Гудзь Н.І. (Львів)
Денисенко О.І. (Чернівці)
Дідушко О.М. (Івано-Франківськ)
Дяків І.В. (Івано-Франківськ)
Журавська О.Я. (Івано-Франківськ)
Кіндратів Е.О. (Івано-Франківськ)
Ілащук Т.О. (Чернівці)
Ільїна Т.В. (Івано-Франківськ)
Ковалишин Т.М. (Івано-Франківськ)
Козань Н.М. (Івано-Франківськ)
Колісник С.В. (Харків)
Колоскова О.К. (Чернівці)
Король Д.М. (Полтава)
Кочерга З.Р. (Івано-Франківськ)
Крижанівська А.Є. (Івано-Франківськ)
Кузенко О.Й. (Івано-Франківськ)
Купновицька-Сабадош М.Ю.
(Івано-Франківськ)
Куцик Р.В. (Івано-Франківськ)
Кухтенко О.С. (Харків)
Лембрик І.С. (Івано-Франківськ)Лісецька І.О. (Івано-Франківськ)
Лутковський Р.А. (Вінниця)
Максим'юк В.В. (Чернівці)
Махлинєць Н.П. (Івано-Франківськ)
Мельник І.В. (Івано-Франківськ)
Мельник Д.О. (Івано-Франківськ)
Мельничук Г.М. (Івано-Франківськ)
Нестерак Р.В. (Івано-Франківськ)
Нестерчук Н.Є. (Рівне)
Олексюк Л.І. (Івано-Франківськ)
Остафійчук С.О. (Івано-Франківськ)
Палійчук І.В. (Івано-Франківськ)
Попович В.І. (Івано-Франківськ)
Притула В.П. (Київ)
Пустойт М.М. (Івано-Франківськ)
Пюрік В.П. (Івано-Франківськ)
Сабадош Р.В. (Івано-Франківськ)
Саволук С.І. (Київ)
Сас І.А. (Івано-Франківськ)
Сенчій В.М. (Івано-Франківськ)
Середюк Н.М. (Івано-Франківськ)
Стецьків А.О. (Івано-Франківськ)
Струк О.А. (Івано-Франківськ)
Трутяк Р.І. (Львів)
Чупахіна С.В. (Івано-Франківськ)
Юрчишин О.І. (Івано-Франківськ)
Шипіцина О.В. (Вінниця)
Якубовська І.О. (Івано-Франківськ)
Ain Raal (Естонія)
Katarzyna Walicka-Curpys (Польща)
Leroy Joel (Ветнам)
Maria Teresa Mingo-Gomez (Іспанія)
Melnitchouk Nelya (Бостон, США)
Sandra Jimenez Del Barrio (Іспанія)
Tomasz Kulpok-Bagiński (Польща)
Viliam Donic (Словачія)
Marino Marco Vito (Італія)**Секретар інформаційної служби:** Косташук Т.З.**Коректори з мов:**Родчин З.Я., Рибчинська Р.С., Шпільчак Л.Я.
Жмендак Н.В., Тихонюк Х. Я., Гончарук О.В.
Пачків М.А., Деніна Р.В.**Комп'ютерна верстка та дизайн:**

Чурпій І.І.

Художній редактор:

The Ministry of Health Care of Ukraine
Ivano-Frankivsk National Medical University**“Art of Medicine”**

scientific and practical journal

№ 1 (29) January-March, 2024**Category B****The journal is listed in international scientometric data bases:****Founder and publisher:**
Ivano-Frankivsk National
Medical University**Certificate of state registration**
KB № 22689-12589P
of 24.03.2017Approved for publication by the
Scientific Council of
Ivano-Frankivsk National
Medical University
the Protocol № 6 from 30.05.2017The Journal is on the List of
Specialized Editions in which the
main results of scientific research
are allowed to be published.

The main specialities are:

221 - Dentistry,

222 – Medicine,

227 – Physical therapy,
ergotherapy,

228 – Pediatrics

(The Order of Ministry of Education
and Science of Ukraine of 15.10.2019
№1301)226 - Pharmacy, Industrial Pharmacy
(The Order of Ministry of Education
and Science of Ukraine of 25.10.2023
№1309)**Editorial Office Address:**
Ivano-Frankivsk National Medical
University

Halytska Street, 2

Ivano-Frankivsk

76018 Ukraine

Tel: (0342) 53-32-95;

(0342) 53-79-84.

Fax: (03422) 2-42-95

www.art-of-medicine.ifnmu.edu.ua

E-mail: artmedifdmu@gmail.com

artofmedicine@ifnmu.edu.ua

Google Scholar, “Scientific Periodicals of Ukraine” the Vernadsky
National Library of Ukraine, Academic Resource Index – ResearchBib,
Directory of open access scholarly resources (ROAD),
Directory of Research Journals Indexing (DRJI), EuroPub, Crossref**Editorial Director:** M.M. Rozhko **Managing Editor:** I.K. Churpii
Science Editor: I.P. Vakaliuk**Editorial Board:**O.Ya. Andriichuk, V. M.Dudnyk, G.M. Ersteniuk,
O.M. Koshovyi, Z.R. Ozhohan, S.V. Fedorov**Associate Editors:**

O.D. Aleksandruk (Ivano-Frankivsk)

R.R. Antoniv (Ivano-Frankivsk)

T.G. Bakaliuk (Ternopil)

V.I. Bida (Kyiv)

V.B. Borisenko (Kharkiv)

P.O. Boldizhar (Uzhhorod)

O.S. Bobrykovich (Ivano-Frankivsk)

O.I. Denysenko (Chernivtsi)

I.V. Diakiv (Ivano-Frankivsk)

O.M. Didushko (Ivano-Frankivsk)

N.V. Vasyliuk (Ivano-Frankivsk)

S.M. Vasyliuk (Ivano-Frankivsk)

R.M. Vitovskii (Kyiv)

V.A. Georgiyants (Kharkiv)

M.A. Georgiyants (Kharkiv)

N.I. Henyk (Ivano-Frankivsk)

N.A. Godlevskaya (Vinnitsya)

N.R. Golod (Ivano-Frankivsk)

V.V. Holotyuk (Ivano-Frankivsk)

N.I. Hudz (Lviv)

A.R. Hrytsyk (Ivano-Frankivsk)

O.Ya. Zhurakivska (Ivano-Frankivsk)

E.O. Kindrativ (Ivano-Frankivsk)

T.O. Ilashchuk (Chernivtsi)

T.V. Iliina (Ivano-Frankivsk)

T.M. Kovalyshyn (Ivano-Frankivsk)

N.M. Kozan (Ivano-Frankivsk)

Z.R. Kocherha (Ivano-Frankivsk)

D.M. Korol (Poltava)

O.K. Koloskova (Chernivtsi)

S.V. Kolisnyk (Kharkiv)

A.Ye. Kryzhanivska (Ivano-Frankivsk)

M.Yu. Kupnovytska-Sabadosh

(Ivano-Frankivsk)

R.V. Kutsyk (Ivano-Frankivsk)

O.Y. Kuzenko (Ivano-Frankivsk)

O.S. Kukhtenko (Kharkiv)

I.S. Lembryk (Ivano-Frankivsk)

I.O. Lisetska (Ivano-Frankivsk)

R.A. Lutkovskiy (Vinnitsya)

V.V. Maksymyuk (Chernivtsi)

N.P. Makhlynets (Ivano-Frankivsk)

I.V. Melnuk (Ivano-Frankivsk)

D.O. Melnyk (Ivano-Frankivsk)

H.M. Melnychuk (Ivano-Frankivsk)

N.E. Nesterchuk (Rivne)

R.V. Nesterak (Ivano-Frankivsk)

I.V. Paliichuk (Ivano-Frankivsk)

V.P. Pyuryk (Ivano-Frankivsk)

M. M. Pustovoit (Ivano-Frankivsk)

V.P. Prytula (Kyiv)

V.I. Popovych (Ivano-Frankivsk)

S.O. Ostafijchuk (Ivano-Frankivsk)

L.I. Oleksiuk (Ivano-Frankivsk)

S.I. Savoliuk (Kyiv)

R.V. Sabadosh (Ivano-Frankivsk)

I.A. Sas (Ivano-Frankivsk)

N.M. Seredyuk (Ivano-Frankivsk)

V. M. Senchii (Ivano-Frankivsk)

A.O. Stetskiy (Ivano-Frankivsk)

O.A. Struk (Ivano-Frankivsk)

O.V. Shypitsina (Vinnitsya)

R.I. Trutiak (Lviv)

S. V. Chupakhina (Ivano-Frankivsk)

I.O. Yakubovska (Ivano-Frankivsk)

O.I. Yurchyshyn (Ivano-Frankivsk)

Ain Raal (Estonia)

Katarzhyna Walicka-Cupryś (Poland)

Leroy Joel (Vietnam)

Maria Teresa Mingo-Gomez (Spain)

Melnitchouk Nelya (Boston, USA)

Sandra Jimenez Del Barrio (Spain)

Tomasz Kulpok-Bagiński (Poland)

Viliam Donic (Slovakia)

Marino Marco Vito (Italy)

Information System Secretary: T.Z. Kostashchuk

Foreign language Proofreading: Z.Ya. Rodchyn, R.S. Rubchynska

L.Ya. Shpilchak, N.V. Zhmendak

K. Ya. Tykhonyuk, O.V. Honcharuk

Computer Design and M. A. Pachkiv.

desktop publishing: R.V. Denina

Art Editor: I.I. Churpii

The work of the Editorial Board is focused on the norms and principles of the International Committee of Medical Journal EditorsThis work is licensed under a Creative Commons
Attribution 4.0 International License

ЗМІСТ
ОРИГІНАЛЬНІ ДОСЛІДЖЕННЯ**ВПЛИВ ТРАКЦІЇ НА БОЛЬОВИЙ
СИНДРОМ ПРИ РАДИКУЛОПАТІЇ
ПОПЕРЕКОВОГО ВІДДІЛУ ХРЕБТА**Т.Г. Бакалюк, Н.Р. Макарчук,
О.М. Василевський, Г.О. Стельмах, В.І. Табачний 9**ХАРАКТЕРИСТИКА МІКРОБНОГО
ПЕЙЗАЖУ У ПАЦІЄНТОК З
ЕНДОМЕТРІОМАМИ, ПОЄДНАНИМИ ІЗ
ЗАПАЛЬНИМИ ПРОЦЕСАМИ ОРГАНІВ
МАЛОГО ТАЗУ**Р.В. Бігун, С.О. Остафійчук, О.М. Куса,
О.М. Перхулин, Г.С. Гвоздецька 15**CRANIOTOPOGRAPHIC FEATURES OF
THE TRANSVERSE SINUSES OF THE DURA
MATER OF THE BRAIN OF THE CRANIAL
VAULT OF MATURE PEOPLE**S.V. Bondarenko, S.I. Serbin, S.O. Dubyna,
V.V. Kalyuzhna, V.P. Bilash, N.L. Svintsyts'ka,
S.I. Danylchenko 21**ОСОБЛИВОСТІ МІКРОСТРУКТУРИ ЯДЕР
ГІПОТАЛАМУСА ЗА УМОВ ВПЛИВУ
ГЛУТАМАТУ НАТРІЮ ТА ЙОГО ВІДМІНИ**

М.І. Ващенко 26

**МОРФОЛОГІЧНІ ЗМІНИ ПЕЧІНКИ ПРИ
СТРЕПТОЗОТОЦИН-ІНДУКОВАНОМУ
ЦУКРОВОМУ ДІАБЕТІ ТА ВВЕДЕННІ
ІНСУЛІНУ ТА АДЕМЕТІОНІНУ НА
РАННІХ ЕТАПАХ ЕКСПЕРИМЕНТУ**

Л.М. Грицишин, Ю.І. Попович 33

**ІНТЕГРАЦІЯ СУЧАСНИХ ТЕХНОЛОГІЙ У
РЕАБІЛІТАЦІЮ ПІСЛЯ ТРАВМ ТА
ОПЕРАЦІЙ В УКРАЇНСЬКІЙ МЕДИЧНІЙ
ПРАКТИЦІ**

М.М. Дуб, В.В. Гнатюк, А.І. Єфімова 39

**КЛІНІЧНА ХАРАКТЕРИСТИКА ЖІНОК ІЗ
ГІПЕРТЕНЗИВНИМИ РОЗЛАДАМИ ПІД
ЧАС ВАГІТНОСТІ НА ТЛІ ВЕГЕТАТИВНОЇ
ДИСФУНКЦІЇ**

Я.С. Задорожний, С.О. Остафійчук 45

**ТЕНДЕНЦІЇ ХІРУРГІЧНОЇ ТАКТИКИ ПРИ
АБДОМІНАЛЬНИХ ГРИЖАХ**В.О. Кавин, О.Л. Ткачук, Р.Л. Парахоняк,
В.В. Парахоняк, А.Ю. Візнович 52**ANATOMICAL CHARACTERISTICS OF THE
THIGH PARAMETERS THE STUDENTS OF
BUKOVYNA**

S.Yu. Karatieieva 56

CONTENTS
ORIGINAL ARTICLES**INFLUENCE OF TRACTION ON PAIN
SYNDROME IN LUMBAR
RADICULOPATHY**T.H. Bakaliuk, N.R. Makarchuk, O.M. Vasilevsky,
H.O. Stelmakh, V.I. Tabachnyi**CHARACTERISTICS OF THE MICROBIOTA
IN PATIENTS WITH ENDOMETRIOMAS
COMBINED WITH PELVIC INFLAMMA-
TORY PROCESSES**R.V. Bihun, S.O. Ostafichuk, O.M. Kusa,
O.M. Perhulyn, G.S. Hvozdetzka**CRANIOTOPOGRAPHIC FEATURES OF
THE TRANSVERSE SINUSES OF THE DURA
MATER OF THE BRAIN OF THE CRANIAL
VAULT OF MATURE PEOPLE**S.V. Bondarenko, S.I. Serbin, S.O. Dubyna,
V.V. Kalyuzhna, V.P. Bilash, N.L. Svintsyts'ka,
S.I. Danylchenko**PECULIARITIES OF HYPOTHALAMIC
NUCLEI MICROSTRUCTURE OF THE
WHITE RAT UNDER THE EFFECT OF
SODIUM GLUTAMATE AND ITS ABSENCE**

M.I. Vashcheniuk

**MORPHOLOGICAL CHANGES OF THE
LIVER IN STREPTOZOTOCIN-INDUCED
DIABETES AND ADMINISTRATION OF
INSULIN AND ADEMETHIONINE IN THE
EARLY STAGES OF THE EXPERIMENT**

L.M. Hrytsyshyn, Yu.I. Popovych

**INTEGRATION OF MODERN
TECHNOLOGIES IN REHABILITATION
AFTER INJURIES AND OPERATIONS IN
UKRAINIAN MEDICAL PRACTICE**

M.M. Dub, V.V. Hnatiuk, A.I. Yefimova

**CLINICAL CHARACTERISTICS OF
WOMEN WITH HYPERTENSIVE STATES IN
PREGNANCY AND AUTONOMIC NERVOUS
SYSTEM DYSFUNCTION**

Y.S. Zadorozhniy, S.O. Ostafichuk

**TRENDS OF SURGICAL TACTICS AT
ABDOMINAL HERNIAS**V.O. Kavyn, O.L. Tkachuk, R.L. Parakhoniak,
V.V. Parakhoniak, A.Y. Viznovych**ANATOMICAL CHARACTERISTICS OF THE
THIGH PARAMETERS THE STUDENTS OF
BUKOVYNA**

S.Yu. Karatieieva

DOI: 10.21802/artm.2024.1.29.21
UDC 616.831.9-053.81/.85**CRANIOTOPOGRAPHIC FEATURES OF THE TRANSVERSE SINUSES OF THE DURA MATER OF THE BRAIN OF THE CRANIAL VAULT OF MATURE PEOPLE**S.V. Bondarenko¹, S.I. Serbin¹, S.O. Dubyna¹, V.V. Kalyuzhna¹, V.P. Bilash², N.L. Svintsyts'ka²,
S.I. Danylchenko³¹Donetsk national medical university, Department of human anatomy, physiology and pathological physiology, Lyman-Kropyvnytskyi, Ukraine²Poltava state medical university, Department of human anatomy, Poltava, Ukraine³Kherson State University, Department of Physical Therapy, Occupational Therapy, Kherson, Ukraine

ORCID ID: 0000-0002-6554-0724, e-mail: stanislav.bondarenko1187@gmail

ORCID ID: 0000-0003-4162-9377, e-mail: tachserg@i.ua

ORCID ID: 0000-0003-0721-0855, e-mail: serj.dubina1989@gmail.com

ORCID ID: 0009-0001-5638-0626, e-mail: kaliuhnavy@gmail.com

ORCID ID: 0000-0002-7178-3394, e-mail: vpbilash@ukr.net

ORCID ID: 0000-0002-6342-6792, e-mail: nataliya_leonidovna@ukr.net

ORCID ID: 0000-0001-5312-0231, e-mail: svetlanaadanilch@gmail.com

Abstract. The goal of our research is the description of craniotopographic features of the transverse sinuses of the dura mater.

The aim and the methods of research. In order to achieve the goal, a set of methods for morphological studies was developed: macro- and micropreparation of anatomical objects of the brain; cranio- the morphometry of veins, sinuses, and the cervian structures of the cephalic brain; preparation of corrosive (acrylic) ulcerative preparations of veins, sinuses of the dura mater and periorbital lesions of the head; injection technique; variational and statistical analysis of morphometric data; computer-graphic analysis. This study was conducted on 70 preparations of veins and sinuses of the dura mater of the brain.

Results of the study and their discussion. Considering the above-mentioned facts, we established a craniotopographical projection of the transverse sinuses in relation to generally accepted craniotopographical planes and points. According to the data we have obtained, the venous collectors (transverse sinuses) studied by us have a certain projection analogy on the bones of the cranial vault and the corresponding correlations to the craniometric points, which can be used in medical craniology. In this regard, there is a natural range of individual anatomical variability in the parameters of the dura mater, which are described in people of mature age. The obtained data on the structure, shape, size and position of the venous collectors of the cranial vault (transverse sinuses) can be used in surgical interventions on the cerebrospinal fluid system, including the ventricles and cerebrospinal fluid pathways.

Transverse sinuses, located on both sides of the skull in the horizontal plane, are of important practical importance from a neurosurgical point of view. In adults, fully formed right and left transverse sinuses are always noted, which perform an important transport function of carrying venous blood from the drain of the sinuses into the sigmoid sinus and internal jugular veins.

The transverse sinuses of the posterolateral surface are adjacent to the inner surface of the parietal and occipital bones, which explains the frequent damage and injury to the collector in various skull injuries. In addition, these collectors must be taken into account during surgical access to various parts of the brain, including the lateral ventricles.

Taking into account the above, it is possible to distinguish different areas of the accumulation of veins that flow into the transverse sinuses. The densest location of tributaries, branches and anastomoses is observed in the initial part of the collectors, near the drainage of the sinuses, due to the surface veins of the occipital lobe and the veins of the cerebellar tent. The second place of accumulation of venous vessels is noted in the area of the transition of the transverse sinuses into the sigmoid sinuses, where the superficial temporal and parietal veins are concentrated.

Conclusions. The obtained results not only complement the known facts, but also more deeply reveal the principles of the craniotopographic structure of the transverse sinuses of the dura mater of the cranial vault of people of mature age.

On the basis of the actual data obtained, the position is substantiated, according to which a kind of “vascular zone” in the middle part of the transverse sinuses is topographically distinguished, where, in our opinion, it is better to perform surgical interventions in neurosurgical practice.

Keywords: craniotopographic method, dura mater, transverse sinuses, crypt and shape of the head (skull), people, mature age.

Introduction. Dura mater sinuses have a complex craniotopographic and morphometric structure of a closed intracranial vascular system of the brain, and the interest in these structures does not decrease every year, not only in relation to humans, but also to some species of animals, such as primates [1, 2].

According to the existing classifications, all the dura mater sinuses are divided into two large groups: the vault and the base of the skull. The first includes the upper sagittal sinus (USS), lower sagittal sinus (LS), straight sinus (SS), left and right transverse sinuses (LTS and RTS) and sinus drainage (SD). The above mentioned venous collectors of the dura mater of the brain have been the object of our research in recent years. The second group of the dura sinuses includes: cavernous, left and right, upper and lower petrosal sinuses, petrosal-squamosal, ethmoid-parietal and marginal sinuses [3, 4, 5].

It is clear from the information sources that recently the interest in the sinuses of the dura mater, transverse in particular, is not decreasing [6, 7, 8].

Based on the important anatomical and physiological role in the outflow of blood, we have studied in detail the shape, size, position and relationship of the

transverse sinuses of the dura mater located within the cranial vault cavity.

The aim of the study. The aim of our study was to establish the craniotopographic features of the transverse sinuses of the dura mater of the brain vault of the head (skull) of adults.

Object and research methods. In the course of our research, we used the following research methods: macro- and microdissection of anatomical objects of the brain; cranio- and morphometry of veins, dura mater sinuses and cerebrospinal structures of the brain; production of corrosive (acrylic) casts-preparations of veins, sinuses of the dura mater and cerebrospinal fluid formations; injection technique; variational and statistical analysis of morphometric data; computer graphic analysis [9, 10, 11]. This study was conducted on 70 preparations of veins and sinuses of the dura mater of the brain (Table 1).

Table 1

The number of anatomical objects depending on the shape of the head						
Head Shape \ Periods	Dolichocephals		Mesocephals		Brachycephals	
	Male	Female	Male	Female	Male	Female
First mature	2	1	4	3	11	6
Second mature	2	1	6	5	18	11
Total	4	2	10	8	29	17

This study was carried in the conditions of the patho-anatomical departments of Donetsk region (oblast) of the Department of Health of the Donetsk Regional State Administration and the Department of Human Anatomy, physiology and pathological physiology of Donetsk National Medical University (Lyman, Kropyvnytskiy) with the assistance of the Department of Human Anatomy of Poltava State Medical University for the time period of 2015-2019 (obtaining material), and 2020-2022 – data processing and summarizing.

The work was carried out in accordance with the requirements of the “Instructions on conducting a forensic medical examination” (order of the Ministry of Health of Ukraine No. 6 dated from 17.01.1995), in accordance with the requirements and norms, the standard regulation on ethics of the Ministry of Health of Ukraine No. 690 dated from 23.09.2009, “The procedure for removing biological objects from the dead, whose bodies are subject to forensic medical examination and patho-anatomical examination, for scientific purposes” (2018).

Our research was performed using such methods as morphometric method and mathematical methods (variation and correlation analyses). Statistical processing of the obtained data was carried out using the Microsoft Excel 2010© licensed software package. Statistical data processing included two types of analysis, as indicated above – variation analysis and correlation analysis [12].

Connection of the publication with planned research works. This study is part of the research project “Morphofunctional study of human internal organs and laboratory animals in various aspects of experimental medicine”, state registration number 0121U108258.

Research results. Transverse sinuses, located on both sides of the skull in the horizontal plane, are of important practical importance from a neurosurgical point of view. In adults, fully formed right and left transverse sinuses are always noted, which perform an important transport function of carrying venous blood from the drain

of the sinuses into the sigmoid sinus and internal jugular veins. The classic position of the left and right transverse sinuses is given on Figure 1.

The transverse sinuses of the posterolateral surface are adjacent to the inner surface of the parietal and occipital bones, which explains the frequent damage and injury to the collector in various skull injuries. In addition, these collectors must be taken into account during surgical access to various parts of the brain, including the lateral ventricles.

Considering the above-mentioned facts, we established a craniotopographical projection of the transverse sinuses in relation to generally accepted craniotopographical planes and points. The inion, opisthocranium and asterion points are taken as a basis (Figure 2).

According to our data, the transverse sinuses are located between the points i – op at the level of the sagittal line, and then their axis is directed laterally to the asterion point (ast), which is located at the junction of the parietal, temporal and occipital bones. Morphometric data of the transverse sinuses are given in Table 2.

It has been revealed that the length of the transverse sinuses in adults ranges from 4.5 to 8.1 cm. Taking into account the individual structure of the head, it varies from 6.5 to 8.1 cm in dolichocephals, from 5.1 to 6.1 in mesocephals cm, in brachycephals - from 4.5 to 6.3 cm. Accordingly, the width of the sinus walls on both sides has characteristic parameters depending on the type of structure and shape of the head and skull. Therefore, the upper wall of the transverse sinuses has a range of variability from 0.9 to 1.5 cm with a constant increase in representatives of the meso- and brachymorphic statures (Table 2). The back wall of the collector varies from 0.8 to 1.3 cm with a similar trend of morphometric indicators.

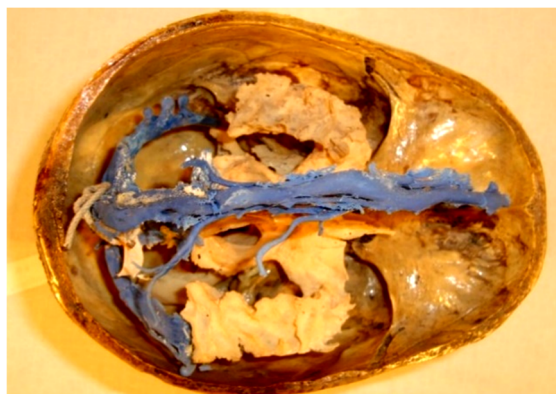


Fig. 1. Topographic and anatomical positions of the transverse sinuses of an adult

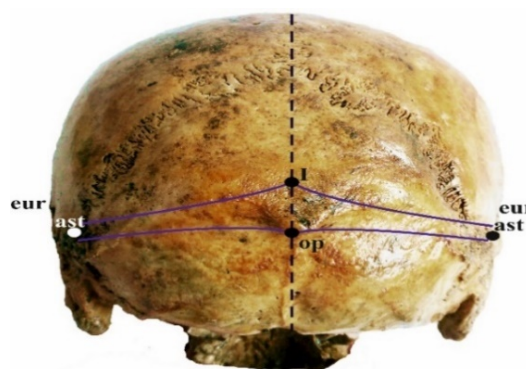


Fig. 2. Craniotopographic projection of the transverse sinuses along the generally accepted craniometric points of the skull

Table 2

Individual anatomical variability of the transverse sinuses of a person of mature age (sm)

Shape of the head Research of sign	Dolichocephals		Mesocephals		Brachycephals	
	Length	6,5-8,0	6,7-8,1	5,2-6,1	5,1-6,0	4,5-6,2
Width of the upper wall	0,9-1,0	0,9-1,1	1,0-1,1	1,0-1,2	1,2-1,5	1,2-1,5
Width of the back wall	0,8-1,0	0,8-1,0	0,9-1,1	0,9-1,1	1,0-1,2	1,1-1,3
Width of the lower wall	0,9-1,0	0,9-1,0	1,0-1,1	0,9-1,0	1,1-1,2	1,0-1,2
Height of the Lumen	1,2-1,3	1,2-1,3	1,0-1,1	0,9-1,0	1,0-1,1	1,0-1,1

The width of the lower wall of the transverse sinuses ranges from 0.9 to 1.2 cm with a slight expansion in brachycephals.

The height of the lumen of the left and right transverse sinuses, which varies from 0.9 to 1.3 cm, is interrelated with these parameters (Table 2). It should be taken into consideration that this size is slightly increased in people with a dolichomorphic head structure.

The greatest width of the three walls of the transverse sinus is noted in the initial (middle) section at the point of exit from the drainage of the sinuses. In some cases, it could reach 1.6-1.7 cm. In the middle part of the venous collector, the average width of the walls is from 1.0 to 1.3 cm, and in the end (side) - from 0.8 to 1.0 cm.

The narrowest section of the transverse sinuses is the transition to the sigmoid sinuses, where a peculiar bend is noted at the level of the upper edge of the temporal bone. The degree of narrowing does not exceed 0.7-0.8 cm and, to a significant extent, depends on the caliber of the mastoid emissary vein. The larger it is, the smaller the diameter of the indicated axillary fold.

Transverse sinuses are characterized by a triangular shape throughout the structure of the sinus, with the exception of the terminal section, where it takes on an oval shape with smooth and streamlined sinus walls. It is a well-known that the upper and lower walls of this collector are formed due to the splitting of the leaves of the tent of the cerebellum, and the back - a leaf of the convexity part of the dura mater.

Taking into account the above, it is advisable to distinguish several craniotopographical forms of the

structure of the transverse sinuses: expanded symmetrical; extended asymmetric; tapered symmetrical and tapered asymmetric. These forms are explained by the different level of departure from the drainage of the sinuses on the left and right in relation to the sagittal and horizontal planes. Classical symmetry of the position of these venous collectors is very rare.

Throughout its structure, the transverse sinuses collect blood from different parts of the brain, the dura mater, tent and cerebellar tissues. Their number depends on the severity of the anastomotic branches and the presence of main vessels. Among them, there are large, medium and small veins that form the venous pool of these collectors (Figure 3).

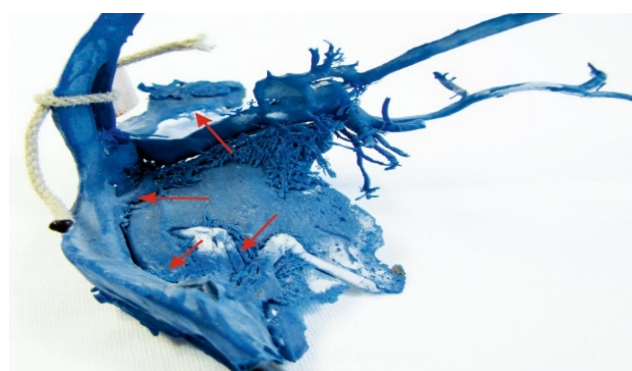


Fig. 3. Presence of venous tributaries and anastomoses throughout its transverse sinus structure (indicated by arrows). Corrosive preparation

Taking into account the above, it is possible to distinguish different areas of the accumulation of veins that flow into the transverse sinuses. The densest location of tributaries, branches and anastomoses is observed in the initial part of the collectors, near the drainage of the sinuses, due to the surface veins of the occipital lobe and the veins of the cerebellar tent. The second place of accumulation of venous vessels is noted in the area of the transition of the transverse sinuses into the sigmoid sinuses, where the superficial temporal and parietal veins are concentrated. Based on the detected topography, a kind of “vascular zone” should be identified in the middle part of the transverse sinuses and it is better to perform surgical intervention here.

Discussion. The specialized literature contains quite a bit of information about such a significant issue of modern neurosurgery and neuromorphology as the craniotopographical structure of the transverse sinuses of the dura mater (DMB) of the cranial vault of adults. Only in some fairly outdated works there is little information about the specifics of the indicated DMB sinuses.

H. Browning (1953) described several main types of confluens sinuum: symmetric, when there is a general fusion of the superior sagittal sinus (SSS) and straight sinus from which the left and right transverse sinuses depart. The aforementioned DMB sinuses have a similar location, however, a demarcated ridge of membrane tissue may be located in the drainage lumen. Split type, in which there is a bifurcation of the straight sinus, when the SSS passes into the right or left transverse sinus. Bifurcated type of SSS, when the straight sinus passes into the right or left transverse sinus [13].

According to D.B. Bekov, S.S. Mikhailov (1979), the transverse sinus often has the form of a trihedral prism, and its posterior wall is adjacent to the lamina interna of the occipital bone, and the superior and inferior walls are derivatives of the cerebellar tent (Yu.N. Vovk, 1977) [14,15].

Research by M.A. Sreseli, O.P. Bolshakov (1977) showed that the projection of the transverse sinuses on the lamina interna of the occipital bone, depending on the extreme forms of the skull structure, is symmetrical in 93% of cases; the right sinus is higher than the left in 6%; left higher than right - 1% of cases. The projection line of the transverse sinuses is preferably 0.5-1 mm above the horizontal plane drawn through the center of the protuberantia occipitalis externa. Despite this, the transverse sinuses can begin with two trunks from the VSP, when the projection is 0.5-2 cm above the horizontal drawn through the center of the external occipital protrusion [16].

Based on the above facts, we can confidently assert the theoretical and practical significance of our research for modern neuromorphology and neurosurgery.

Conclusions. Summarizing our research, we can draw the following conclusions:

1. Transverse sinuses are located between points i – op at the level of the sagittal line, and then their axis is directed laterally to the point asterion (ast), which is located at the junction of the parietal, temporal and occipital bones.

2. The length of the transverse sinuses in adults ranges from 4.5 to 8.1 cm. Taking into account the individual structure of the head, it varies from 6.5 to 8.1

cm in dolichocephals, from 5.1 to 6.1 cm in mesocephals, in brachycephals - from 4.5 to 6.3 cm.

3. The upper wall of the transverse sinuses has a range of variability from 0.9 to 1.5 cm with a constant increase in representatives of the meso- and brachymorphic stature. The back wall of the collector varies from 0.8 to 1.3 cm with a similar trend of morphometric indicators. The width of the lower wall of the transverse sinuses ranges from 0.9 to 1.2 cm with a slight expansion in brachycephals.

4. The height of the lumen of the left and right transverse sinuses varies from 0.9 to 1.3 cm. It should be noted that this size is slightly increased in people with a dolichomorph head structure.

5. Topographically, a peculiar “vascular zone” is highlighted in the middle part of the transverse sinuses, where, in our opinion, it is better to perform surgical interventions.

Prospects for further research. The obtained data on the established craniotopographic features of the transverse sinuses of the dura mater of the cranial vault of mature people can be used in practical health care (neurosurgery) to optimize surgical interventions on the veins and sinuses of the dura mater and the cerebrospinal fluid system of the brain of adults.

References.

1. Walsh DR, Lynch JJ, O' Connor DT, Newport DT, Mulvihill JJE. Mechanical and structural characterisation of the dural venous sinuses. *Sci Rep.* 2020 Dec 10;10(1):21763. PMID: 33303894. PMCID: PMC7729903. doi: 10.1038/s41598-020-78694-4
2. Sabec Pereira DK, de Melo FR, de Melo FCSA, Pereira KF, Vulcani VAS. Anatomy of the dura mater venous sinus of *Alouatta belzebul*. *Anat Histol Embryol.* 2021 Jan;50(1):58-64. PMID: 32738181. doi: 10.1111/ahc.12599
3. Kiliç T, Akakin A. Anatomy of cerebral veins and sinuses. *Front Neurol Neurosci.* 2008;23:4-15. PMID: 18004050. doi: 10.1159/000111256
4. Chernov VS. Individual'na morfometrychna minlyvist' verkhnoy strilovoyi pazukhy tverdoyi obolony holovnoho mozku u doroslykh lyudey u zalezhnosti vid typu budovy cherepa [Individual morphometric variability of the upper sagittal sinus of the dura mater in adults depending on the type of skull structure]. *Ukr Zh Klin Lab Med.* 2013;8(3):69-75. [Ukrainian]
5. Bondarenko S. Morphometric characteristic of venous sinuses of the dura mater located in the fornix of the skull. *Znanstvena misel.* 2020;1(41):14-16.
6. Pettersson DR, McLouth JD, Addicott B, Pollock JM, Barajas RF. The Gibraltar Sign: An Anatomic Landmark for Predicting Transverse Sinus Dominance Laterality on Conventional MRI. *J Neuroimaging.* 2018 Jan;28(1):99-105. PMID: 28722200. doi: 10.1111/jon.12457
7. Rădoi PM, Mincă DI, Rusu MC, Toader C. Bilateral absence of the transverse sinuses with fenestrated superior sagittal sinus draining through enlarged occipital and marginal sinuses. *Folia Morphol (Warsz).* 2022;81(3):781-784. PMID: 34308541. doi: 10.5603/FM.a2021.0070
8. Indiran V, Sivakumar V, Kumaran R, Jagannathan K. Can occipital lobe bending, Gibraltar sign of superior

- sagittal sinus groove and jugular foramen dimensions predict transverse sinus dominance? *Neuroradiol J.* 2023 Apr;36(2):158-162. PMID: 35727589. PMCID: PMC10034698. doi: 10.1177/19714009221111086
9. Bondarenko SV, Dubyna SO, Chernyshova OYe, Serbin SI, Tykhonova OO. Porivnyalna anatomiya pazushno-likvornykh struktur porozhnyny cherepa u doroslykh lyudey ta yikh praktychne znachennya : monohrafiya [Comparative anatomy of sinuous-liquor structures of the cranial cavity in adults and their practical significance: monograph]. Kropyvnytskyu-Poltava; 2023. 207 s. [Ukrainian]
 10. Bondarenko SV, Dubina SO, Serbin SI, Khapchenkova DS, Fedorova IO, Koptev MM, et al. Craniotopographic characteristics of sinuous-liquor relationships in mature people. *Ukr ž med biol sportu.* 2023; 1(41):62-7. doi: 10.26693/jmbs08.01.062
 11. Horvat AA, Molnar OO, Minkovych VV. Obrobka, vizualizatsiya ta analiz eksperymentalnykh danykh z vykorystannyam paketu Origin: Navchalnyu posibnyk [Processing, visualization and analysis of experimental data from using the Origin package: Tutorial]. Uzhhorod: Vydavnytstvo UzhNU "Hoverla"; 2020. 64p.
 12. Tanavalee C, Luksanapruksa P, Singhatanadgige W. Limitations of Using Microsoft Excel Version 2016 (MS Excel 2016) for Statistical Analysis for Medical Research. *Clin Spine Surg.* 2016;29(5):203–4. PMID: 27135620. doi: 10.1097/BSD.0000000000000382
 13. Browning H. The confluence of dural venous sinuses. *Am J Anat.* 1953 Nov;93(3):307-29. PMID: 13104335. doi: 10.1002/aja.1000930302
 14. Bekov DB, Mikhaylov SS. Atlas of arteries and veins of the human brain. 1979. 288 p.
 15. Vovk YuN. Surgical anatomy of the cerebellar tent and its practical significance. K; 1977. 21 p.
 16. Sreseli MA, Bolshakov OP. Clinical and physiological aspects of the morphology of the dural sinuses. 1977. 176 p.

УДК 616.831.9-053.81/.85

КРАНІОТОПОГРАФІЧНІ ОСОБЛИВОСТІ ПОПЕРЕЧНИХ ПАЗУХ ТВЕРДОЇ ОБОЛОНИ ГОЛОВНОГО МОЗКУ СКЛЕПІННЯ ЧЕРЕПА ЛЮДЕЙ ЗРІЛОГО ВІКУ

С. В. Бондаренко¹, С. І. Сербін¹, С. О. Дубина¹,
В. В. Калюжна¹, В. П. Білаш², Н. Л. Свінцицька²,
С. І. Данильченко³

¹Донецький національний медичний університет,
кафедра анатомії людини, фізіології та патологічної
фізіології м. Лиман-Кропивницький, Україна

²Полтавський державний медичний університет,
кафедра анатомії людини, м. Полтава, Україна

³Херсонський державний університет, кафедра
фізичної терапії та ерготерапії, м. Херсон, Україна,

ORCID ID: 0000-0002-6554-0724,
e-mail: stanislav.bondarenko1187@gmail
ORCID ID: 0000-0003-4162-9377, e-mail: tachserg@i.ua
ORCID ID: 0000-0003-0721-0855,
e-mail: serj.dubina1989@gmail.com
ORCID ID: 0009-0001-5638-0626,
e-mail: kaliuhnavy@gmail.com
ORCID ID: 0000-0002-7178-3394,
e-mail: vpbilash@ukr.net
ORCID ID: 0000-0002-6342-6792,
e-mail: nataliya_leonidovna@ukr.net
ORCID ID: 0000-0001-5312-0231,
e-mail: svetlanaadanilch@gmail.com

Резюме. Метою дослідження було встановлення краніотопографічних особливостей поперечних пазух твердої оболони головного мозку склепіння голови (черепа) людей зрілого віку.

Матеріал та методи. Дослідження проведено на 70 препаратах вен і пазух твердої оболони головного мозку. За результатами аналізу уточнено топографо-анатомічні положення поперечних пазух дорослої людини; встановлено краніотопографічну проекцію поперечних пазух стосовно загальноприйнятих краніотопографічних площин і точок; з'ясовано індивідуальну анатомічну мінливість поперечних пазух людини зрілого віку з різними типами будови голови (черепа) за такими досліджуваними ознаками, як: довжина, ширина верхньої стінки, ширина задньої стінки, ширина нижньої стінки та висота просвіту; уточнена відома наявність венозних притоків й анастомозів упродовж поперечних пазух.

Результати. Встановлено, що вищеперелічені венозні колектори мають певну проекційну аналогію на кістки склепіння черепа та відповідні співвідношення до краніометричних точок, які можуть бути використані в медичній краніології з урахуванням природного діапазону індивідуальної анатомічної мінливості параметрів твердої оболони головного мозку, котрі описано в людей зрілого віку.

Висновки. Встановлено різні ділянки скупчення вен, які впадають у поперечні пазухи. Найбільш густе розташування притоків, гілок і анастомозів можна спостерігати в початковому відділі колекторів, поблизу стоку пазух завдяки поверхневим венам потиличної частки та венам намету мозочка. Друге місце скупчення венозних судин відзначаємо в ділянці переходу поперечних пазух у сигмоподібні, де сконцентровані поверхневі скроневі та тім'яні вени. Тож коли ґрунтуємося на встановленій топографії виділяємо своєрідну «безсудинну зону» в середній частині поперечних пазух, яка є благодатною при виконанні оперативних втручань на венах і синусах твердої мозкової оболони й лікворній системі головного мозку.

Ключові слова: краніотопографічний метод, тверда оболонка головного мозку, поперечні пазухи, склепіння та форма будови голови (черепа), людина, зрілий вік.

Стаття надійшла в редакцію 01.11.2023 р.

Стаття прийнята до друку 27.02.2024 р.